



PadhAI

HPCS General Studies 2026

QUESTION PAPER (SET-D)

PadhAI Educational Research | April 2026

ENGLISH VERSION

1 Consider the following statements :

1. Current fallow land - left without cultivation for ^{less} two or more than two agricultural years. 2+
2. Other than current fallow land - left uncultivated for the past 1 to 5 agricultural years. ✓
3. Gross cropped area - Area sown more than once in an agricultural year plus net sown area is known as gross cropped area. net more than once

How many of the statements given above are correct?

- (A) Only one (B) Only two
(C) All three (D) None
(E) Question not attempted

2 Consider the following pairs :

1. National Water : Kottapuram-
Ways of India (NW1) ^{NW3} Kollam stretch
2. National Water : Allahabad-
Ways of India (NW2) ^{NW1} Haldia stretch
3. National Water : Sadia-Dhubri
Ways of India (NW3) stretch

How many of the above pairs are correctly matched?

- (A) Only one pair
(B) Only two pairs
(C) All three pairs
(D) None of the pairs
(E) Question not attempted

3 Given below are two statements :

Statement I :

Long staple (American) cotton in north-western parts of India is called 'narma'. ✓

Statement II :

Tur, an important pulse is also known as yellow gram.

In the light of the above statements, choose the correct answer from the options given below:

- (A) Both Statement I and Statement II are true.
(B) Both Statement I and Statement II are false.
(C) Statement I is true but Statement II is false.
(D) Statement I is false but Statement II is true.
(E) Question not attempted

4 Arrange the following historical events concerning Haryana region in the correct chronological order (earliest to latest):

- I. The Treaty of Surji-Anjangaon transferring control of Haryana to the British East India Company. 1802
- II. The establishment of George Thomas's independent kingdom at Hansi. ^{Post 1861}
- III. The annexation of the Kaithal state by the British under the Doctrine of Lapse. 1856
- IV. The Battle of Karnal between Nader Shah and Muhammad Shah. 1739

- (A) IV, II, I, III (B) IV, I, II, III
(C) II, IV, I, III (D) I, IV, II, III
(E) Question not attempted

5 Consider the following pairs:

- 1. Mosquito : Egg, Larva, Pupa & Adult
- 2. Silk moth : Egg, Larva, Pupa and Adult
- 3. Cockroaches : Egg, Nymph, Pupa and Adult

How many of the above pairs are correctly matched?

- (A) Only one pair (B) Only two pairs
- (C) All three pairs (D) None of the pairs
- (E) Question not attempted

6 Given below are two statements:

Statement I:

Rabi crops includes paddy, soyabean, pigeon pea, maize and cotton while crops like wheat, gram, peas are kharif crops. X
Rabi

Statement II:

Vegetables and fruits provide vitamins and minerals in addition to small amounts of proteins and fats. T

In the light of the above statements, choose the correct answer from the options given below:

- (A) Both Statement I and Statement II are true.
- (B) Both Statement I and Statement II are false.
- (C) Statement I is true but Statement II is false.
- (D) Statement I is false but Statement II is true.
- (E) Question not attempted

7 Which of the following is/are correct?

- 1. Fertilizers are commercially available products that provide nitrogen, phosphorous and potassium to crops.
- 2. Fertilizer contains a large amount of organic matter which improves the water holding capacity of the soil. X

Select the answer using the code given below:

- (A) 1 only (B) 2 only
- (C) Both 1 and 2 (D) Neither 1 nor 2
- (E) Question not attempted

8 Consider the following pairs:

- 1. Natural : Lactational
contraceptive : Amenorrhoea T✓
- 2. Barrier method : Progestasert → (pili) X
Hormone
- 3. Hormone Releasing : Saheli tablet X
IUDs Intra Uterine Device

How many of the above pairs are correctly matched?

- (A) Only one pair (B) Only two pairs
- (C) All three pairs (D) None of the pairs
- (E) Question not attempted

ENGLISH VERSION

9 Given below are two statements :

Statement I :

Akbar and his elite first saw tobacco in 1604 AD.

Statement II :

Abul Fazl in his *Ain-i-Akbari* described the cultivation and use of tobacco in detail.

In the light of the above statements, choose the correct answer from the options given below:

- (A) Both Statement I and Statement II are true.
 (B) Both Statement I and Statement II are false.
 (C) Statement I is true but Statement II is false.
 (D) Statement I is false but Statement II is true.
 (E) Question not attempted

10 Given below are two statements :

Statement I :

During British colonialism, the Santhals were settled at the foothills of the Rajmahal and this large area was considered their land (Damin-i-Koh) and was made to cultivate it.

Statement II :

Landlords, moneylenders, and the colonial government would reclaim the cleared land of the Santhals by imposing heavy taxes and high interest rates. This led to the Santhal rebellion.

In the light of the above statements, choose the correct answer from the options given below:

- (A) Both Statement I and Statement II are true.
 (B) Both Statement I and Statement II are false.
 (C) Statement I is true but Statement II is false.
 (D) Statement I is false but Statement II is true.
 (E) Question not attempted

11 Given below are two statements :

Statement I :

Before the railway age, the town of Mirzapur was a collection center for cotton coming from the Deccan.

Statement II :

Cotton production in Bombay almost came to an end due to the American Civil War.

In the light of the above statements, choose the correct answer from the options given below:

- (A) Both Statement I and Statement II are true.
 (B) Both Statement I and Statement II are false.
 (C) Statement I is true but Statement II is false.
 (D) Statement I is false but Statement II is true.
 (E) Question not attempted

12 Given below are two statements :

Statement I :

The British land revenue system, known as the Summary Settlement, was implemented in Awadh in 1856.

Statement II :

The Summary Settlement increased the income of the middleman taluqdars by granting him new land.

In the light of the above statements, choose the correct answer from the options given below:

- (A) Both Statement I and Statement II are true.
 (B) Both Statement I and Statement II are false.
 (C) Statement I is true but Statement II is false.
 (D) Statement I is false but Statement II is true.
 (E) Question not attempted

13 Given below are two statements:

Statement I :

Per-capita income is not sufficient to measure the development.

Statement II :

Per-capita income is defined as total population divided by total income. X

In the light of the above statements, choose the correct answer from the options given below:

- (A) Both Statement I and Statement II are true.
- (B) Both Statement I and Statement II are false.
- (C) Statement I is true but Statement II is false.
- (D) Statement I is false but Statement II is true.
- (E) Question not attempted

14 Given below are two statements:

Statement I :

Disguised Unemployment is a structural phenomenon in Indian Agriculture. T

Statement II :

Marginal Productivity of additional labour Units is zero ($MP_L = 0$) in Indian Agriculture due to disguised unemployment. T

In the light of the above statements, choose the correct answer from the options given below:

- (A) Both Statement I and Statement II are true.
- (B) Both Statement I and Statement II are false.
- (C) Statement I is true but Statement II is false.
- (D) Statement I is false but Statement II is true.
- (E) Question not attempted

15 Which of the following is/are correct?

- 1. Collateral requirements expand the credit access for landless labourers. X
- 2. Multinational Corporation may influence the domestic production patterns. T

Select the answer using the codes given below:

- (A) 1 only
- (B) 2 only
- (C) Both 1 and 2
- (D) Neither 1 nor 2
- (E) Question not attempted

16 Which of the following is/are correct?

- 1. GDP is calculated by adding up the value of all final goods and services produced in a country during a given year. T
- 2. Intermediate consumption represents the value of goods and services as inputs in the production process, excluding fixed assets.

Select the answer using the codes given below:

- (A) 1 only
- (B) 2 only
- (C) Both 1 and 2
- (D) Neither 1 nor 2
- (E) Question not attempted

17 Consider the following statements:

- 1. Formal credit sources are regulated by government sources. RBI rules
- 2. Expansion of Institutional credit reduces dependence on money lenders. T
- 3. Informal lenders generally charge lower rate of interest due to competition among themselves. F X higher

How many of the statements given above are correct?

- (A) Only one
- (B) Only two
- (C) All three
- (D) None
- (E) Question not attempted

18 Consider the following pairs:

- 1. Commercial banks : Provide regulated loans.
- 2. Self help Groups : Provide Group credit.
- 3. Informal Money lenders : Provide loans as per RBI rules. X

How many of the above pairs are correctly matched?

- (A) Only one pair
- (B) Only two pairs
- (C) All three pairs
- (D) None of the pairs
- (E) Question not attempted

2017 → GST
2018 → e-billing

Blacksea

B
SEA GM
D

ENGLISH VERSION

- 19 Consider the following statements:
- In Haryana, State Govt. provides interest subvention. ✓
 - The e-billing for all types of bills was introduced in 2018 in Haryana. ✓
 - For Haryana, the effective rate of interest on crop loan is zero percent. X 2%.
- How many of the statements given above are correct?
- (A) Only one (B) Only two
(C) All three (D) None
(E) Question not attempted

- 20 Consider the following statements:
- Haryana initiated gender budgeting in 2008-09 financial year. ✓
 - Old Age Samman Allowance Scheme is run by Haryana with 100% support from central government. ✓
 - Haryana's per capita income is higher than national average for 2025-26. ✓
- How many of the statements given above are correct?
- (A) Only one (B) Only two
(C) All three (D) None
(E) Question not attempted

- 21 Given below are two statements:
- Statement I :** The Excise & Taxation Department Haryana administers VAT on sale of goods except 4 non GST goods. X
- Statement II :** The excise collection on liquor is one of the major sources of revenue for the state government in Haryana. ✓
- In the light of the above statements, choose the correct answer from the options given below:
- (A) Both Statement I and Statement II are true.
(B) Both Statement I and Statement II are false.
(C) Statement I is true but Statement II is false.
(D) Statement I is false but Statement II is true. ✓
(E) Question not attempted

- 22 Consider the following pairs :
- | | |
|---------------------|---------------------------------|
| Straits | Bays/Seas/Gulfs |
| 1. Hormuz Strait | Red Sea and Gulf of Aden Oman X |
| 2. Davis Strait | Baffin Bay and Labrador Sea |
| Greenland | |
| 3. Bosphorus Strait | Black Sea and Sea of Marmara T |
- How many of the above pairs are correctly matched?
- (A) Only one pair (B) Only two pairs
(C) All three pairs (D) None of the pairs
(E) Question not attempted

- 23 Consider the following statements :
- Kuroshio is a cold ocean current in the Pacific ocean. X
 - Kuroshio ocean current flows from tropics to south pole. X North Pacific
 - Kuroshio is an ocean current in western part of the North Pacific ocean. ✓
- How many of the statements given above are correct?
- (A) Only one (B) Only two
(C) All three (D) None
(E) Question not attempted

- 24 Consider the following information :

	Origin	River	State/UT
1.	Brahmagiri Hills	Kaveri ✓	Karnataka Kerala
2.	A spring at Verinag	Chenab X Jhelum	Jammu and Kashmir ✓
3.	Amarkantak Plateau	Godavari Narmada Mahanadi	Madhya Pradesh ✓

- In how many of the above rows is the given information correctly matched?
- (A) Only one (B) Only two
(C) All three (D) None
(E) Question not attempted

ENGLISH VERSION

25 In the context of the 'Parivar Pehchan Patra' (PPP) scheme of Haryana, which of the following statements is/are correct? **(6)**

1. It mandates the creation of an **8-digit** unique alphanumeric ID for every family residing in Haryana.
2. The data obtained through PPP is legally protected under the Haryana Parivar Pehchan Act, 2021, which designates the Haryana Trust Based Reading Authority as the data custodian.

- (A) Only 1 (B) Only 2
(C) Both 1 and 2 (D) Neither 1 nor 2
(E) Question not attempted

(26) How many of the following GI (Geographical Indication) tags are officially associated exclusively or jointly with the state of Haryana?

1. Phulkari
2. Basmati Rice
3. Sirsa Kinnow
4. Rohtak Rewri

- (A) Only one (B) Only two
(C) Only three (D) All four
(E) Question not attempted

27 Match List I (Major Power/Industrial Projects) with List II (Location/District) and select the correct code.

LIST-I (Project)	LIST-II (District)
I. Gorakhpur Nuclear Power Plant	a. Jhajjar
II. Rajiv Gandhi Thermal Power Project	b. Hisar
III. Mahatma Gandhi Super Thermal Power Project	c. Fatehabad
IV. Deen Bandhu Chhotu Ram Thermal Power Plant	d. Yamunanagar

- (A) I-c, II-b, III-a, IV-d
(B) I-b, II-c, III-d, IV-a
(C) I-c, II-a, III-b, IV-d
(D) I-d, II-b, III-a, IV-c
(E) Question not attempted

28 Arrange the following traditional folk fairs of Haryana in the chronological order of the Hindu calendar months they are typically celebrated in (from Chaitra onwards):

- March**
Chaitra ←
1. Masani Mela (Gurugram) **January**
 2. Kapal Mochan Mela (Yamunanagar)
 3. Gugga Naumi Mela **August**
 4. Phalgu Mela (Faral) **March**

- (A) I, III, IV, II (B) I, IV, III, II
(C) III, I, IV, II (D) IV, I, III, II
(E) Question not attempted

143

ENGLISH VERSION

29 Match List I (Freedom Fighters/Reformers of Haryana) with List-II (Associated Journals/Contributions) and select the correct code:

LIST-I

(Personality)

LIST-II

(Contribution / Journal)

- | | |
|----------------------------|---------------------------------|
| I. Sir Chhotu Ram | a. 'Sandesh' (Weekly Newspaper) |
| II. Pandit Neki Ram Sharma | b. 'Jat Gazette' (Urdu Weekly) |
| III. Lala Murlidhar | c. 'Haryana Tilak' (Urdu/Hindi) |
| IV. Sriram Sharma | d. Khair-Andesh (Newspaper) |

- (A) I-b, II-a, III-d, IV-c
 (B) I-b, II-c, III-a, IV-d
 (C) I-a, II-b, III-c, IV-d
 (D) I-c, II-a, III-d, IV-b
 (E) Question not attempted

30 Assertion A:

The Revolt of 1857 in the Haryana region lacked a centralized leadership, leading to fragmented tribal and localized peasant uprisings rather than a unified military campaign.

Reason R:

The strategic assassination of Nawab Abdur Rahman Khan of Jhajjar before the outbreak of the mutiny decapitated the central command of the Haryana rebels.

- (A) Both A and R are true and R is the correct explanation of A.
 (B) Both A and R are true but R is NOT the correct explanation of A.
 (C) A is true but R is false.
 (D) A is false but R is true.
 (E) Question not attempted

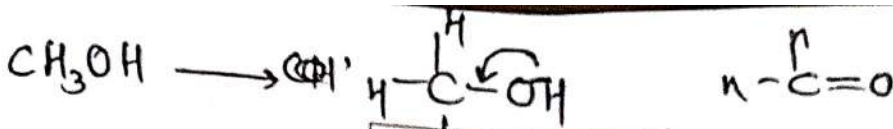
31 How many of the following statements regarding the drainage system of Haryana are correct?

- The Markanda river, an ephemeral stream, changes its name to the Aruna river after entering the state. T
- The Sahibi river originates in the Mewat hills and is a major tributary of the Yamuna, joining it near Okhla. T
- The Tangri river is a tributary of the Markanda river and originates in the Morni hills. T
- The Drishadvati river is generally identified with the modern-day Chautang river system. T

- (A) Only one (B) Only two
 (C) Only three (D) All four
 (E) Question not attempted

32 Which of the following best describes the 'Bagar' tract of Haryana?

- (A) The floodplains formed by the Yamuna river in the eastern districts. X
 (B) The heavily eroded, gullied lands found exclusively at the foothills of the Shiwaliks. X
 (C) The dry, sandy upland region along the Rajasthan border featuring shifting sand dunes.
 (D) The highly fertile, low-lying loamy plains in the central districts like Rohtak and Sonapat. ✓
 (E) Question not attempted



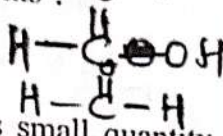
PSMAZINTI
 Hydrogen
 Cu
 G

ENGLISH VERSION

33 Given below are two statements :

Statement I :

Denatured alcohol contains small quantity of methanol, a poisonous substance.



Statement II :

Methanol is poisonous because it gets oxidized to methanoic acid in liver, which coagulates the protoplasm. methanol

Methanol

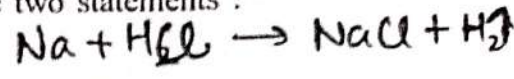
In the light of the above statements, choose the correct answer from the options given below:

- (A) Both Statement I and Statement II are true.
- (B) Both Statement I and Statement II are false.
- (C) Statement I is true but Statement II is false.
- (D) Statement I is false but Statement II is true.
- (E) Question not attempted

35 Given below are two statements :

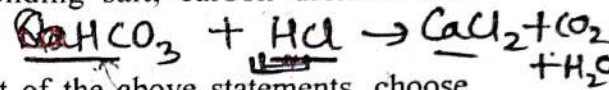
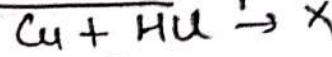
Statement I :

All metals evolve hydrogen gas upon reaction with hydrochloric acid.



Statement II :

Hydrogen carbonates of all metals except sodium, react with acids to give a corresponding salt, carbon dioxide and water.



In the light of the above statements, choose the correct answer from the options given below:

- (A) Both Statement I and Statement II are true.
- (B) Both Statement I and Statement II are false.
- (C) Statement I is true but Statement II is false.
- (D) Statement I is false but Statement II is true.
- (E) Question not attempted

34 Consider the following information:

	Column-A	Column-B	Column-C
1.	Smoke X	Colloid	Gas in solid
2.	Milk X	Emulsion	Homogeneous
3.	Pumice stone X	Foam	Heterogeneous

In how many of the above rows is the given information correctly matched?

- (A) Only one
- (B) Only two
- (C) All three
- (D) None
- (E) Question not attempted

36 Consider the following statements:

1. Dental caries or tooth decay begins when bacteria acting on sugars produce alcohol that soften or demineralise the enamel.
2. Dental caries or tooth decay begins when bacteria acting on sugars produce acetone that soften or demineralise the enamel.
3. Dental caries or tooth decay begins when bacteria acting on sugars produce acids that softens or demineralise the enamel.

How many of the statements given above are correct?

- (A) Only one
- (B) Only two
- (C) All three
- (D) None
- (E) Question not attempted

ENGLISH VERSION

37 Consider the following statements :

1. The Inter-State Council can inquire into disputes between the states.
2. It can discuss subjects in which states, or the Union and one or more states, have a common interest. **T**
3. Union territories are not represented in the Inter-state Council. **Delhi & Puducherry**

How many of the statements given above are correct ?

- (A) Only one (B) Only two
 (C) All three (D) None
 (E) Question not attempted

38 Consider the following statements:


$$F = ma \quad a = 0$$

1. An object moving with constant velocity has zero net force acting on it. **T**
2. Action and reaction forces act on the same body. **X**
3. A large force acting for a short time can produce a large change in momentum. **T**

$F \times dt = m_1 v_1 - m_2 v_2$
 How many of the statements given above are correct?

- (A) Only one (B) Only two
 (C) All three (D) None
 (E) Question not attempted

39 Consider the following pairs :

1. If ciliary muscles : focal length of the eye lens increases
 are relaxed ^{more light}
2. If eye lens : enables us to see
 becomes thicker  nearby objects
 clearly
3. For a young adult : near point is about
 with normal vision \rightarrow 25 cm **(T)**

How many of the above pairs are correctly matched?

- (A) ~~Only one pair~~
 (B) Only two pairs
 (C) All three pairs
 (D) None of the pairs
 (E) Question not attempted

40 Consider the following statements:

1. The loudness of a sound is determined basically by its frequency. ^{amplitude} **X**
2. The frequency of the sound wave does not change when it travels from one medium to another. **(T)**
3. Audible range of the average human ear extends from about 20 Hz to 20 kHz. **(T)**

How many of the statements given above are correct?

- (A) Only one (B) Only two
 (C) All three (D) None
 (E) Question not attempted

ENGLISH VERSION

- 41 Consider the following pairs :
1. Pathmar : Horse Postal System
 2. Uluq : Foot Postal System
 3. Dawa → Messengers T
- How many of the above pairs are correctly matched?
- (A) Only one pair
(B) Only two pairs
(C) All the three pairs
(D) None of the pairs
(E) Question not attempted

- 42 Consider the following pairs :
1. Bernier : Describes the efficiency of the postal system.
 2. Ibn Battuta : Always compares India with the superiority of Europe.
 3. Abul Fazal : Considers land revenue as a "remuneration of kingship," or a demand made in exchange for providing security to the people, rather than a tax.
- How many of the above pairs are correctly matched?
- (A) Only one pair
(B) Only two pairs
(C) All the three pairs
(D) None of the pairs
(E) Question not attempted

- 43 Consider the following pairs :
- (Compilation) (is related)
1. Siyar-ul-Auliya : tazkiras, meaning recollection of the biographies of Sufi saints.
 2. Maktubat-e-Imam Rabbani : Maktubat, meaning collection of written letters.
 3. Fawaid-al-Fu'ad : Mulfuzat, meaning conversations of Sufi saints.
- How many of the above pairs are correctly matched?
- (A) Only one pair
(B) Only two pairs
(C) All the three pairs
(D) None of the pairs
(E) Question not attempted

- 44 Consider the following pairs :
1. Duarte Barbosa : Portuguese T
 2. Nicolo de' Conti : Russian Italian
 3. Afanasy Nikitin : Italian F Russian
- How many of the above pairs are correctly matched?
- (A) Only one pair
(B) Only two pairs
(C) All the three pairs
(D) None of the pairs
(E) Question not attempted

- 45 Consider the following pairs:
- (Vijayanagar Fact) (Relation)
1. Hiriya : Canal T
 2. Kamalapuram : Platform
 3. Amara Nayak : Military Commander T
- How many of the above pairs are correctly matched?
- (A) Only one pair
(B) Only two pairs
(C) All the three pairs
(D) None of the pairs
(E) Question not attempted

- 46 Consider the following pairs:
- Always
1. Nalayiradivya- : Compilation of Nayanas
prabandham X Shaiva hymns in Tamil language
 2. Andal (T) → Vishnu's beloved
 3. Tavaram : The poems of Appar, Sambandar and Sundarar Nayanas
- How many of the above pairs are correctly matched?
- (A) Only one pair
(B) Only two pairs
(C) All three pairs
(D) None of the pairs
(E) Question not attempted

47 Consider the following pairs:

1. Kigali Amendment : Phasing down Hydrofluorocarbons (HFCs). ✓
2. Paris Agreement : Adopted in 2015. ✓
3. Montreal Protocol : Addresses biodiversity loss.

How many of the above pairs are correctly matched?

- (A) Only one pair (B) Only two pairs
(C) All three pairs (D) None of this pairs
(E) Question not attempted

48 Consider the following statements regarding United Nations Economic and Social Council (ECOSOC):

1. Members are elected based on regional representation.
2. India has been elected under the Asia-Pacific group for the term 2026-28. ✓
3. ECOSOC is a subsidiary organ of the UN Security Council. X

How many of the statements given above are correct?

- (A) Only one (B) Only two
(C) All three (D) None
(E) Question not attempted

49 Consider the following statements:

1. The India-Middle East-Europe Economic Corridor (IMEC) aims to enhance connectivity between India and Europe. T
2. IMEC includes both rail and maritime components.
3. China is not a founding participant of IMEC. T

How many of the statements given above are correct?

- (A) Only one (B) Only two
(C) All three (D) None
(E) Question not attempted

50 Consider the following statements:

1. India has committed to achieving Net Zero emissions by 2070. T
2. The Nationally Determined contributions (NDCs) are submitted under the Paris Agreement. T
3. NDC targets are legally binding under international law. F

How many of the statements given above are correct?

- (A) Only one (B) Only two
(C) All three (D) None
(E) Question not attempted

51 Given below are two statements:

Statement I :

Project Cheetah aims to reintroduce cheetahs into India after their extinction.

Statement II :

The project is implemented by the National Tiger Conservation Authority. NTCA

In the light of the above statements, choose the correct answer from the options given below:

- (A) Both Statement I and Statement II are true.
(B) Both Statement I and Statement II are false.
(C) Statement I is true but Statement II is false.
(D) Statement I is false but Statement II is true.
(E) Question not attempted

52 Given below are two statements:

Statement I :

The Pacific Ring of Fire is associated with high seismic and volcanic activity. T

Statement II :

It is located along the Indian Ocean coastline of India. X

In the light of the above statements, choose the correct answer from the options given below:

- (A) Both Statement I and Statement II are true.
(B) Both Statement I and Statement II are false.
(C) Statement I is true but Statement II is false.
(D) Statement I is false but Statement II is true.
(E) Question not attempted

ENGLISH VERSION

53 Consider the following information:

Organisation/ Agreement	Feature
1. UNFCCC	Framework for climate negotiations T
2. Kyoto Protocol	Legally binding emission reduction targets for <u>all countries</u> F
3. Global Compact for Migration	Legally binding agreement T

In how many of the above rows is the given information correctly matched?

- (A) Only one (B) Only two
(C) All three (D) None
(E) Question not attempted

54 Consider the following information:

Program/Initiative	Feature
1. BharatNet Project	Aims to provide broadband connectivity in rural India. T
2. National Electric Mobility Mission	Supports <u>EV</u> adoption and infrastructure. T
3. PM Sahaj Bijli Har Ghar Yojana	Provides clean cooking gas to households. X

In how many of the above rows is the given information correctly matched?

- (A) Only one (B) Only two
(C) All three (D) None
(E) Question not attempted

55 Consider the following information:

Convention	Feature
1. UNTOC	Also known as Palermo Convention.
2. UNCAC	Only legally binding universal anti-corruption instrument.
3. UN Spotlight Initiative	Implemented solely by IMF.

In how many of the above rows is the given information correctly matched?

- (A) Only one (B) Only two
(C) All three (D) None
(E) Question not attempted

56 Which of the following is/are correct?

- The Global Carbon Budget 2024 is released by the IPCC. **X**
- It tracks global CO₂ emissions and sinks. **✓**

Select the answer using the codes given below:

- (A) 1 only (B) 2 only
(C) Both 1 and 2 (D) Neither 1 nor 2
(E) Question not attempted

57 Which of the following is/are correct?

- India deployed the first All-women Formed Police Unit in Liberia. **X**
- UN Peacekeeping operations are mandated by the UN General Assembly only. **X**

Select the answer using the codes given below:

- (A) 1 only (B) 2 only
(C) Both 1 and 2 (D) Neither 1 nor 2
(E) Question not attempted

ENGLISH VERSION

58 Consider the following information :

	Name of the Landform	Type of Landform	Agent
1.	Lapies	Depositional	Groundwater
2.	Seif	Depositional	Wind
3.	Horn	Erosional	Glacier

In how many of the above rows is the given information correctly matched?

- (A) Only one (B) Only two
 (C) All three (D) None
 (E) Question not attempted

59 Consider the following statements :

1. When rivers originate from a hill and flow in all directions, the drainage pattern is known as 'trellis' pattern. ~~X~~ *Drainage Radial*
2. The drainage pattern resembling the branches of a tree is known as the 'centripetal' drainage pattern. ~~X~~ *Dendritic*
3. When the rivers discharge their waters from all directions in a lake or depression, the pattern is known as the 'dendritic pattern'. ~~X~~

How many of the statements given above are correct?

- (A) Only one (B) Only two
 (C) All three ~~(D) None~~
 (E) Question not attempted

60 Consider the following statements :

1. Nilgiri-Biosphere reserve has the largest known population of the two endangered animal species, namely the Nilgiri Tahr and the Lion-tailed macaque.
2. Sea cow, an endangered species of marine animals, are found in the Gulf of Mannar biosphere reserve. ✓
3. About 80% of the flowering plants reported from the Western Ghats occur in the Nilgiri Biosphere reserve. ✓

How many of the statements given above are correct?

- (A) Only one (B) Only two
 (C) All three (D) None
 (E) Question not attempted

61 Consider the following statements :

1. Mizoram, also known as the 'Molassis basin', is made of soft unconsolidated deposits. T
2. 'Bugyals' are summer grasslands in the higher reaches of the Great Himalayan ranges.
3. Loktak lake is located in Mizoram. ~~X~~ *Mamapur*

How many of the statements given above are correct?

- (A) Only one ~~(B) Only two~~
 (C) All three (D) None
 (E) Question not attempted

ENGLISH VERSION

62 Given below are two statements :

Statement I :

The highest temperature on oceanic surface is recorded at equator. X **ToC**

Statement II :

The maximum temperature of the oceans is recorded on their surface. **Evaporation**

In the light of the above statements, choose the correct answer from the options given below:

- (A) Both Statement I and Statement II are true.
- (B) Both Statement I and Statement II are false.
- (C) Statement I is true but Statement II is false.
- (D) Statement I is false but Statement II is true.
- (E) Question not attempted

63 Consider the following information :

Place	Minerals/ Energy	States
1. Kudremukh	Iron ore	Karnataka (T)
2. Balaghat	Manganese	Madhya Pradesh X
3. Katni	Bauxite	Chhattisgarh (T)

In how many of the above rows is the given information correctly matched?

- (A) Only one
- (B) Only two
- (C) All three
- (D) None
- (E) Question not attempted

64 Consider the following information :

Type of Farming	Characteristics	Regions
1. Nomadic Herding (T)	Primitive subsistence activity	Sahara and Asiatic deserts Grasslands
2. Extensive Commercial Grain Cultivation	Wheat is the principal crop.	Interior parts of semi-arid lands of the mid latitudes grass
3. Mediterranean	It is known for viticulture.	Mediterranean sea coast Agriculture in Europe. Iran and Canada X

In how many of the above rows is the given information correctly matched?

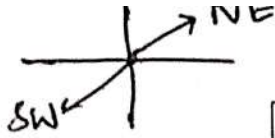
- (A) Only one
- (B) Only two
- (C) All three
- (D) None
- (E) Question not attempted

65 Consider the following statements :

1. In Odisha high grade hematite ore is found in Badampahar mines
2. Very high grade hematites are found in the famous Bailadila range of hills in Jharkhand. **Odisha** **X**
3. Ballari-Chitradurga-Chikkamangaluru-Tumakuru belt in Karnataka has large reserves of iron ore. **T**

How many of the statements given above are correct?

- (A) Only one
- (B) Only two
- (C) All three
- (D) None
- (E) Question not attempted



ENGLISH VERSION

66 Assertion A:

The south-western districts of Haryana receive significantly less monsoon rainfall compared to the north-eastern districts.

Reason R:

The Aravalli range in the south-west acts as a massive orographic barrier, blocking the moisture-laden winds of the Bay of Bengal branch.

- (A) Both A and R are true and R is the correct explanation of A. ✓
- (B) Both A and R are true but R is not the correct explanation of A.
- (C) A is true but R is false.
- (D) A is false but R is true.
- (E) Question not attempted

67 With reference to the Haryana Panchayati Raj Act, 1994 and its subsequent amendments, how many of the following criteria are mandatory for a candidate contesting for the post of a Sarpanch?

1. The candidate must possess a functional toilet in their residential premises. T
 2. A male candidate from the General Category must have passed the Matriculation (10th) examination. T
 3. The candidate must not have any arrears owed to any Primary Agricultural Cooperative Society (PACS). T
 4. The candidate must be a minimum of 25 years of age. 21 years
- (A) Only one (B) Only two
- ✓ (C) Only three (D) All four
- (E) Question not attempted

68 Consider the following statements regarding the imposition of President's Rule (Article 356) in Haryana:

1. President's Rule has been imposed in Haryana exactly three times since its formation. T
2. The first instance of President's Rule in Haryana occurred in 1967 following the fall of the Rao Birender Singh-led Samyukta Vidhayak Dal government. T

- (A) Both Statement 1 and Statement 2 are true. ✓
- (B) Both Statement 1 and Statement 2 are false.
- (C) Statement 1 is true, but Statement 2 is false.
- (D) Statement 1 is false, but Statement 2 is true.
- (E) Question not attempted

69 Assertion A:

The J. C. Shah Commission, established in 1966, unanimously recommended the inclusion of Chandigarh and Kharar tehsil into the newly formed state of Haryana. T

Reason R:

The 1961 linguistic census indicated a decisive Hindi-speaking majority in both Chandigarh and the Kharar tehsil.

- (A) Both A and R are true and R is the correct explanation of A. ✓
- (B) Both A and R are true but R is not the correct explanation of A.
- (C) A is true but R is false.
- (D) A is false but R is true.
- (E) Question not attempted

ENGLISH VERSION

70 Consider the following pairs:

1. Agriculture : State Union List X
2. Livestock and Animal Husbandry : State List
3. Education : Concurrent List ✓

How many of the above pairs are correctly matched?

- (A) Only one pair
- ✓ (B) Only two pairs
- (C) All three pairs
- (D) None of the Pairs
- (E) Question not attempted

71 Consider the following statements :

1. The Parliament may, by law, create a Legislative Council in a state if the Legislative Assembly of the State passes a resolution in this regard by a simple majority. F special
2. The Legislative Assembly of a state has no role to play in the abolition of the Legislative Council of that state. F
3. The total number of members in the Legislative Council of a State cannot exceed one-third of the total number of members in the Legislative Assembly of that State.
4. One-twelfth of Members of Legislative Council are elected by persons residing in the State who have been graduates for at least three years. T

How many of the statement (s) given above are correct?

- (A) Only one statement
- ✓ (B) Only two statements
- (C) Only three statements
- (D) All four statements
- (E) Question not attempted

72 Consider the following statements :

1. The Gram Sabha comprises of the entire population residing within a village. X 18+ only
2. The elections to Panchayats are conducted by the Election Commission of India. X state EC
3. A Panchayat dissolved before the expiry of the period of 5 years and then reconstituted, functions only for the remaining period. T
4. The Panchayats can be given the power to levy taxes by the State. T

How many of the statement (s) given above are correct?

- (A) Only one statement
- ✓ (B) Only two statements
- (C) Only three statements
- (D) All four statements
- (E) Question not attempted

73 Consider the following pairs :

1. Tribes Advisory Council : IV Schedule X Allocation of seats in RS
2. Autonomous Districts : VI Schedule]
3. Regional Councils : V Schedule

How many of the above pairs are correctly matched?

- (A) Only one pair
- ✓ (B) Only two pairs
- (C) All three pairs
- (D) None of the pairs
- (E) Question not attempted

V
↓
RC ✓
VI
AMTM
↓
Autonomous

ENGLISH VERSION

74 Consider the following pairs of current sectoral composition of Indian Economy - Economic Survey 2025-26:

1. Primary Sector : Largest share in employment with lowest share in GDP. **T**
2. Secondary Sector : Lowest share in employment with second largest contribution in GDP. **✓**
3. Tertiary Sector : Largest contribution in GDP. **T**

How many of the above pairs are correctly matched?

- (A) Only one pair (B) Only two pairs
✓ (C) All three pairs (D) None of the pairs
 (E) Question not attempted

75 Consider the following information:

Certification Marks	Product
1. HallMark	LPG cylinder and electronic goods
2. ISI Mark	Jewellery
3. Agmark	Food items like edible oil and honey

In how many of the above rows is the given information correctly matched?

- (A) Only one (B) Only two
✓ (C) All three (D) None
 (E) Question not attempted

76 Consider the following information:

District	Economic Feature-I	Economic Feature-II
1. Panipat	Centre of Textile Industry T	Hub of handloom Industry T
2. Gurugram	Information technology T	Corporate Services T
3. Bhiwani	Agricultural Machinery	Manufacturing

In how many of the above rows is the given information correctly matched?

- (A) Only one (B) Only two
✓ (C) All three (D) None
 (E) Question not attempted

77 Which of the following is/are correct?

1. Industrial base of Haryana mainly consists of Cotton textiles, Sugar processing and Farm machinery production. **T**
2. The state also manufactures chemicals as a variety of consumer goods. **T**

Select the answer using the codes given below:

- (A) 1 only (B) 2 only
✓ (C) Both 1 and 2 (D) Neither 1 nor 2
 (E) Question not attempted

78 Which of the following is/are correct?

1. The estimated fiscal deficit for Haryana as per Budget 2026-27 is 2.6% **T**
2. In Haryana, effective revenue deficit has increased in past three years as the grants for creation of capital assets have gone down. **X**

Select the answer using the codes given below:

- ✓** (A) 1 only (B) 2 only
 (C) Both 1 and 2 (D) Neither 1 nor 2
 (E) Question not attempted

79 Which of the following is/are correct?

1. According to Budget 2026-27 for Haryana, maximum tax revenue comes from State Goods & Service Tax, followed by stamps and registration. **X** *→ GST → Excise duty (liquor)*
2. Haryana governments own tax revenue is estimated to increase by 11% in Budget 2026-27 over Revised Budget 2025-26. **T**

Select the answer using the codes given below:

- (A) 1 only **✓** (B) 2 only
 (C) Both 1 and 2 (D) Neither 1 nor 2
 (E) Question not attempted

ENGLISH VERSION

80 Given below are two statements:

Statement I :

ISRO launched the XPoSat mission in January 2025 to study cosmic X-ray sources.

Statement II :

XPoSat is India's first dedicated mission to study X-ray polarization.

In the light of the above statements, choose the correct answer from the options given below:

- (A) Both Statement I and Statement II are true.
 (B) Both Statement I and Statement II are false.
 (C) Statement I is true but Statement II is false.
 (D) Statement I is false but Statement II is true.
 (E) Question not attempted

81 Given below are two statements:

Statement I :

Sangken is a Buddhist festival in Arunachal Pradesh that marks the community's New Year.

Statement II :

Mopin is an agricultural festival associates with the Garo tribe and aims to drive away evil spirits and ensure prosperity.

In the light of the above statements, choose the correct answer from the options given below:

- (A) Both Statement I and Statement II are true.
 (B) Both Statement I and Statement II are false.
 (C) Statement I is true but Statement II is false.
 (D) Statement I is false but Statement II is true.
 (E) Question not attempted

82 Consider the following statements:

- The Idealistic Theory believes that culture originates from divine inspiration intuition or higher ideas perceived by individuals or groups.
- The Materialistic Theory states that physical environment, climate and means of production shape culture first.
- Vedic Culture developed only from religious beliefs and was not influenced by material conditions.

How many of the statements given above are correct?

- (A) Only one (B) Only two
 (C) All three (D) None
 (E) Question not attempted

83 Consider the following statements:

- Archaeological evidence such as burial urns and earthen pots in South India indicates cultural exchange between the Indus Valley Civilization and the early Tamil culture.
- The presence of a significant number of Dravidian words in the Brahui language of Baluchistan suggests prehistoric cultural contact between North-West India and South India.
- The treatise Tolkappiam, written around 1000 BC, deals exclusively with Tamil grammar and provides no information about the social life of ancient Dravidians.

How many of the statements given above are correct?

- (A) Only one (B) Only two
 (C) All three (D) None
 (E) Question not attempted

ENGLISH VERSION

84 Consider the following statements with regard to joint sitting of the two Houses of the Parliament :

The President of India can call a joint sitting of the Parliament.

1. If after a Bill has been passed by one House and transmitted to the other House and the Bill is rejected by the other House.
2. If there is a disagreement among the Houses regarding the amendments to be made in a Bill.
3. If more than three months lapse from the date of the reception of a Bill by the other House without the Bill being passed by it.

How many of the statements given above are correct?

- (A) Only one (B) Only two
(C) All three (D) None
(E) Question not attempted

85 Consider the following pairs regarding landmark Public Interest Litigation Cases in India:

1. Hussainara Khatoon : Under-trial vs. State of Bihar prisoners case (1979)

2. Sunil Batra vs. Delhi Administration : Case related to torture of prisoners (1980)

3. M.C. Mehta vs. Union of India : Environment protection case (1991)

How many of the above pairs are correct?

- (A) Only one pair (B) Only two pairs
(C) All three pairs (D) None of the pairs
(E) Question not attempted

86 Given below are two statements :

Statement I :

The term 'judicial review' is mentioned in the Constitution of India.

Statement II :

The Supreme Court can review laws on the ground that they violate the federal distribution of powers between the Centre and the States.

In the light of the above statements, choose the correct answer from the options given below:

- (A) Both Statement I and Statement II are true.
(B) Both Statement I and Statement II are false.
(C) Statement I is true but Statement II is false.
(D) Statement I is false but Statement II is true.
(E) Question not attempted

87 Consider the following statements :

1. The doctrine of basic structure of the Constitution was propounded in the Keshwananda Bharti case.
2. Right to Property is not a part of the basic structure of the Constitution.
3. Only the Supreme Court and the High Courts have the right to decide whether any matter is a part of the basic structure of the Constitution.
4. The Parliament of India is not empowered to alter the basic structure of the Constitution.

How many of the statements given above are correct?

- (A) Only one statement
(B) Only two statement
(C) Only three statement
(D) All four statement
(E) Question not attempted

ENGLISH VERSION

88 Consider the following pairs of traditional Haryanvi ornaments and the body part they are worn on:

1. Purli - Nose
2. Hasla - Neck
3. Kadi - Ankle
4. Chhaj - Forehead

Which of the above pairs are correctly matched?

- (A) Only 1, 2, and 3
- (B) Only 2, 3, and 4
- (C) Only 1, 2, and 4
- (D) 1, 2, 3, and 4
- (E) Question not attempted

89 Which of the following statements uniquely identifies the 'Loor' dance of Haryana?

- (A) It is a martial dance performed exclusively by men holding swords and shields during the festival of Dussehra.
- (B) It is a female-exclusive dance performed during the Holi festival, characterized by questions and answers in a singing format.
- (C) It is performed by the devotees of Shiva during the month of Sawan, involving rapid spinning movements.
- (D) It is a slow, rhythmic dance performed to mourn the departure of a bride from her maternal home.
- (E) Question not attempted

90 Match List I (Eminent Literary Figures of Haryana) with List II (Their Renowned Work) and select the correct code:

LIST-I

(Author/Poet)

LIST-II

(Literary Work)

- | | |
|------------------------------|---------------------------|
| I. Khwaja Altaf Hussain Hali | a. Musaddas-e-Hali |
| II. Surdas | b. Sur Sagar |
| III. Uday Bhanu Hans | c. Deshan Me Desh Haryana |
| IV. Rajaram Shastri | d. Jhadu Phiri |

- (A) I-a, II-b, III-c, IV-d
- (B) I-b, II-a, III-d, IV-c
- (C) I-a, II-c, III-b, IV-d
- (D) I-b, II-d, III-a, IV-c
- (E) Question not attempted

91 Given below are two statements :

Statement I :

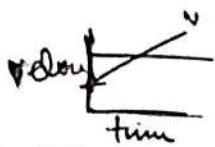
Pampadevi, the goddess of the Vijayanagara Empire, performed penance to marry Vishnu.

Statement II :

This marriage ceremony of Pampadevi is organised with great pomp every year in Virupaksha Temple.

In the light of the above statements, choose the correct answer from the options given below:

- (A) Both Statement I and Statement II are true.
- (B) Both Statement I and Statement II are false.
- (C) Statement I is true but Statement II is false.
- (D) Statement I is false but Statement II is true.
- (E) Question not attempted



$$\frac{v_1}{t_1} = \frac{v_2}{t_2}$$

$$\frac{v_2 - v_1}{t_2 - t_1}$$

$$v-t \Rightarrow \textcircled{a}$$

ENGLISH VERSION

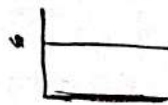
92 Consider the following pairs :

1. Horizontal velocity - time graph : Zero acceleration
2. A linear velocity - time graph with non-zero slope : Uniform motion
3. Curved distance - time graph : Non-uniform motion

v is constant
acceleration
 $a=0$

How many of the above pairs are correctly matched?

- (A) Only one pair
 (B) Only two pairs
 (C) All three pairs
 (D) None of the pairs
 (E) Question not attempted



93 Given below are two statements :

Statement I :

If a copper and a nichrome wire of same length and same area of cross-section carry the same current for same time at room temperature then both will produce the same amount of heat.

$$Q = I^2 R t \quad \& \quad I^2 t$$

Statement II :

If current in a conductor is doubled and time is halved then the heat produced becomes double. \times same

In the light of the above statements, choose the correct answer from the options given below:

- (A) Both Statement I and Statement II are true.
 (B) Both Statement I and Statement II are false.
 (C) Statement I is true but Statement II is false.
 (D) Statement I is false but Statement II is true.
 (E) Question not attempted

94 Given below are two statements :

Statement I :

For mixing concentrated nitric acid and water, water must always be added slowly to concentrated acid. \times Acid to water

Statement II :

For dilution, solvent is required to be added to the concentrated solution. \times

In the light of the above statements, choose the correct answer from the options given below:

- (A) Both Statement I and Statement II are true.
 (B) Both Statement I and Statement II are false.
 (C) Statement I is true but Statement II is false.
 (D) Statement I is false but Statement II is true.
 (E) Question not attempted

95 Consider the following information:

	Substance	Chemical Formula	Use
1.	Bleaching Powder	CaO_2Cl_2 $Ca(OCl)_2$	Making <input checked="" type="checkbox"/> drinking water free of germs
2.	Baking Soda	$NaHCO_3$	Soda-acid fire extinguisher
3.	Washing Soda	Na_2CO_3	Removing permanent hardness of water

In how many of the above rows is the given information correctly matched?

- (A) Only one (B) Only two
 (C) All three (D) None
 (E) Question not attempted

ENGLISH VERSION

- 96 Consider the following pairs:
1. Sri Bhramaramda : Andhra Pradesh
Mallikarjuna Swamy Temple
 2. Shri Kamakshi Devi : Goa **Assam**
Temple
 3. Sun Temple → Odisha
- How many of the above pairs are correctly matched?
- (A) Only one pair (B) Only two pairs
(C) All three pairs (D) None of the pairs
(E) Question not attempted

97 Consider the following information:

No.	Art Form	Origin/Community Associated	Key Feature
1.	Mohiniyattam	Chera patronage (9th-12th century CE)	Graceful swaying movements; linked to Mohini incarnation of Vishnu
2.	Thullal	Introduced by Kunchan Nambiar	Solo satirical dance performed during temple festivals
3.	Kutiyattam	Chakkia Community	Dramatic performance lasting from six to twenty days

- In how many of the above rows is the given information correctly matched?
- (A) Only one (B) Only two
(C) All three (D) None
(E) Question not attempted

98 Consider the following information:

No.	Festival	State	Month
1.	Madai	Chhattisgarh	December
2.	Doongri	Himachal Pradesh	May
3.	Gugga Naumi	Haryana	August-September

- In how many of the above rows is the given information correctly matched?
- (A) Only one (B) Only two
(C) All three (D) None
(E) Question not attempted

99 Consider the following pairs:

1. Extended Fund Facility (EFF) : For structural balance of payments problems. **BOP**
2. Rapid Credit Facility (RCF) : Quick and concessional lending for high-income countries.
3. Resilience and Sustainability Facility (RSF) : Short-term liquidity line.

- How many of the above pairs are correctly matched?
- (A) Only one (B) Only two
(C) All three (D) None
(E) Question not attempted

100 Consider the following information:

Index	Economist
1. Human Development Index	Mahbub UI Haq
2. Physical Quality of life Index	Morris David Morris
3. Multi Dimensional Poverty Index	Suresh Tendulkar

- In how many of the above rows is the given information correctly matched?
- (A) Only one (B) Only two
(C) All three (D) None
(E) Question not attempted

HPCS General Studies 2026: Set-D Answer Key

Q	Ans	Q	Ans	Q	Ans	Q	Ans	Q	Ans
1	B	21	D	41	C	61	B	81	C
2	C	22	B	42	A	62	D	82	B
3	C	23	A	43	C	63	B	83	B
4	A	24	A	44	A	64	B	84	C
5	C	25	B	45	B	65	B	85	C
6	D	26	B	46	B	66	A	86	D
7	A	27	A	47	B	67	C	87	D
8	A	28	A	48	B	68	A	88	D
9	C	29	A	49	C	69	D	89	B
10	A	30	C	50	B	70	B	90	A
11	C	31	D	51	A	71	B	91	D
12	C	32	C	52	C	72	B	92	B
13	C	33	A	53	A	73	A	93	D
14	A	34	A	54	B	74	C	94	D
15	B	35	B	55	B	75	A	95	C
16	C	36	A	56	B	76	C	96	C
17	B	37	B	57	A	77	C	97	C
18	B	38	B	58	B	78	A	98	C
19	B	39	C	59	D	79	C	99	A
20	B	40	B	60	C	80	D	100	B

Note: This unofficial answer key is provided for educational purposes by PadhAI.